

## About Us

### Orchard Health

Provides work-related Occupational Health services to a variety of clients in the private and public sector. These include district councils, light engineering and Further Education (FE) organisations.

We provide a range of services applying specialist skills and expertise to compliment and promote business objectives by identifying employees health needs in order to prevent work related ill health.

We provide advice on research and technology. We have the ability to interpret/ apply clinical findings to the workplace setting, without potentially destabilising the workforce. Orchard Health prides itself in developing and sustaining strong relationships within the organisation and external agencies e.g. PCT and HSE



If you have any queries or require further information contact our friendly team at:

Orchard Health  
'Innisdoon'  
1 Crow Hill Drive  
Mansfield  
Notts  
NG19 7AE

Tel: 01623 400414

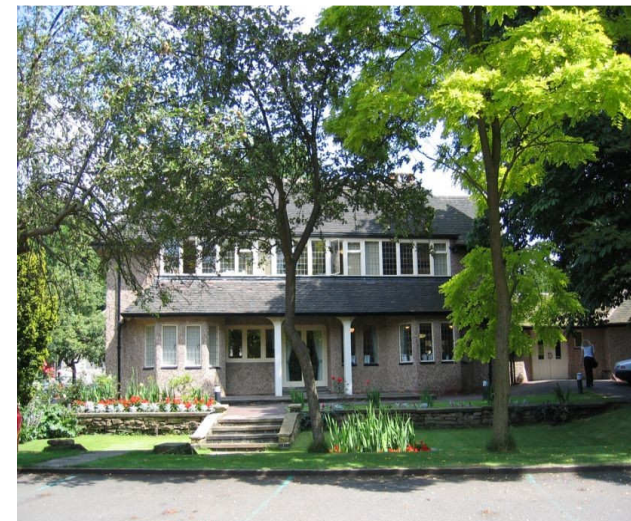
Fax: 01623 400101

Email:

[julie@orchardhealth.co.uk](mailto:julie@orchardhealth.co.uk)

Website:

[www.orchardhealth.co.uk](http://www.orchardhealth.co.uk)



Serving corporate health needs

'Good health = Good business'

## What is Occupational Health

Occupational health is an activity that ensures:

- work does not adversely affect peoples' health
- The impact of ill health on work is appropriately managed.
- Protection of the health of people at work.
- Improvements in the health of the business and indirectly improving the health of the community and the nation



## Health Surveillance

Orchard Health provides a comprehensive programme which includes:

- Testing and screening
- Audiometry
- Respiratory testing (Spirometry)
- Industrial dermatitis
- Workplace/DSE assessments
- Stress in the Workplace
- Hand/Arm Vibration Syndrome
- Locally sited test equipment



## Employment Issues

Orchard Health provide services which includes:

- Sickness absence
- Ill health retirement
- Advice/training to line mangers and Human Resources (HR)
- Pre-employment medicals
- Health & Safety advice
- Litigation and reporting advice
- Medical legal reports
- Counselling services
- Physiotherapy
- Ergonomics/workplace

## Health Promotion

Orchard Health can support or provide, as part of a well- being campaign, health fairs, which include advice/assessment of

- Life style choices
- Blood pressure/ BMI (Body Mass Index)
- Tobacco/smoking cessation
- Alcohol – binge drinking



- Cardiovascular health checks ranging from well person checks to executive health screening

## Training and Tutorials

Which includes:

- MRSA, Cross infection
- Womens/Mens health
- Binge drinking, Smoking cessation
- Epilepsy, asthma and diabetes
- Ergonomics
- Retirement seminars

